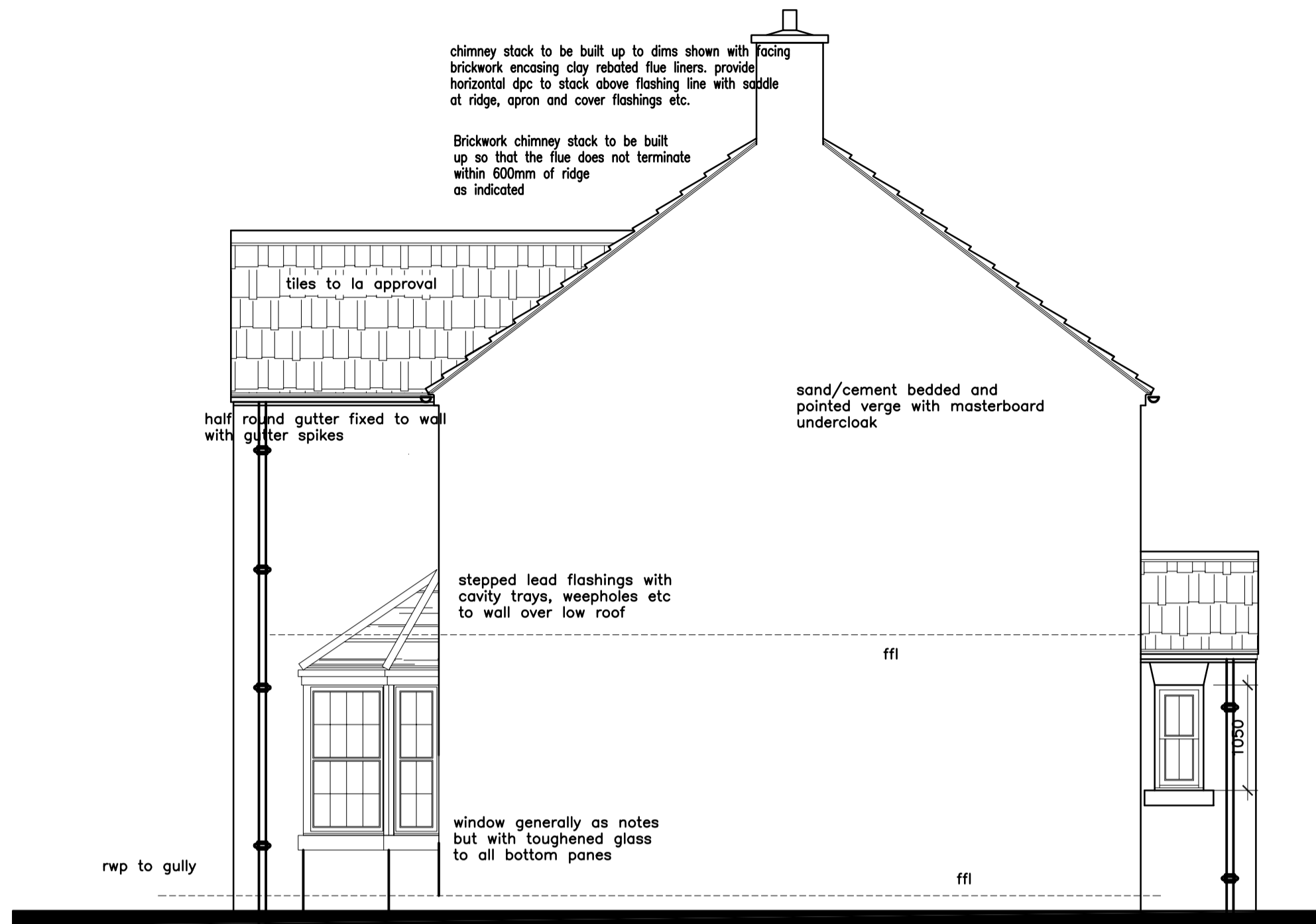


Front Elevation

Front door and frame is to be painted timber with full weatherstripping suitable for 'severe' exposure. glazing to door to be double glazed units incorporating clear toughened safety glass to all panes.



Side Elevation

NOTES

Dining room at rear to be constructed from cavity walls as noted up to cill level (brick outer leaf) with timber windows as noted on section drawing with C24 grade 100 x 100 sw corner posts clad internally and externally with a sw cover trim

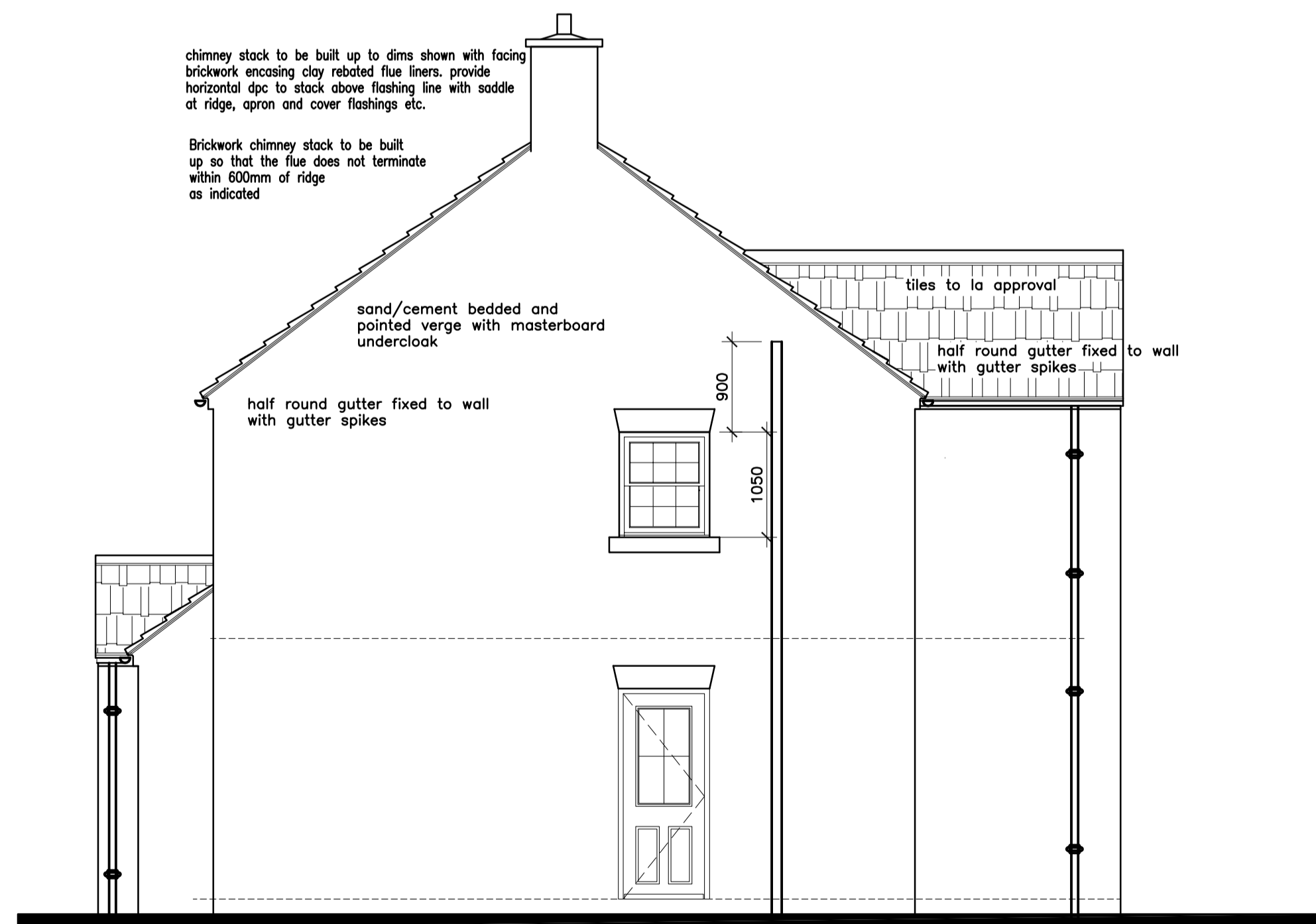
Roof to be constructed from 225 x 100mm C24 eaves beam fixed to corner posts and built into cavity wall supporting loose rafters, hip rafters and ceiling joists  
Whole of roof covered with root tiles on battens and breather membrane as main roof

Provide sw fascia board with half round gutter and rainwater pipe. Provide over roof lead flashings dressed into mortar joints with proprietary stepped cavity trays as noted for main house  
Prove ceiling to room with 250mm mineral wool insulation 12.5mm vapourcheck plasterboard and skim ceiling.



Rear Elevation

French doors to be complete with glazed screens and frame incorporating full weatherstripping suitable for severe exposure, glazing to doors and screen to be double glazed incorporating clear toughened safety glass to all panes.



Side Elevation

rear door and frame is to be painted timber with full weatherstripping suitable for 'severe' exposure. glazing to door to be double glazed units incorporating clear toughened safety glass to all panes.

Properties by Design	
Proposed Development at Reighton House Farm Reighton	
House type K (plot 7) elevations	
<b>andrew fletcher</b> <small>MCIAA</small>	•
Architectural Design Consultant	•
<b>147 design limited</b>	•
Packhorse House	•
51 High Street Stokesley TS9 5AD	•
T: 01642 713300 147design@totalise.co.uk	•
SCALE 1/50@A1	DRAWING 910/41